



## Knights Hill

, London, SE27 0PZ

**Offers invited £599,995**

This End of Terrace property in Gipsy Hill is close to West Norwood, Crystal Palace and South Norwood. It is close to following bus routes:

X68, 468, 450, 196, 130, 2 etc

12 minute walk to West Norwood Station where you can be in Central London in 20 minutes.

This 3 bedroom property has one large double room with en-suite toilet, one double room and one large single room.

The property has one reception room and a large kitchen. There is a family bathroom downstairs.

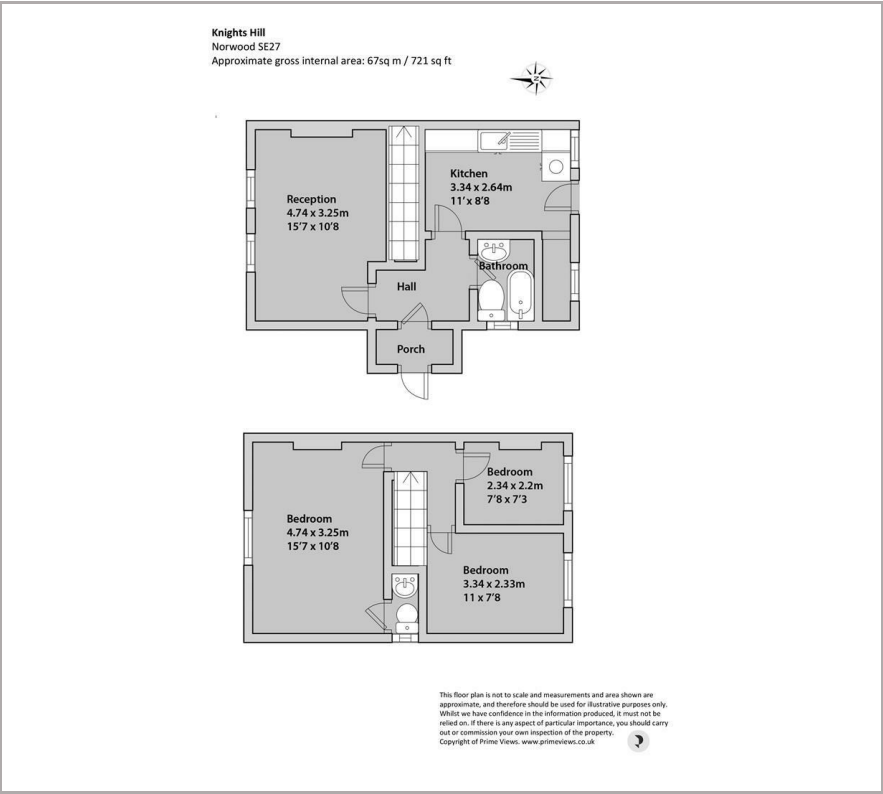
### Viewing

Please contact our team on 0208 138 1990 if you wish to arrange a viewing appointment for this property or require further information.

- Front & Back Garden
- Outhouse
- Potential Driveway/Extension
- 3 bedroom house
- Central Location



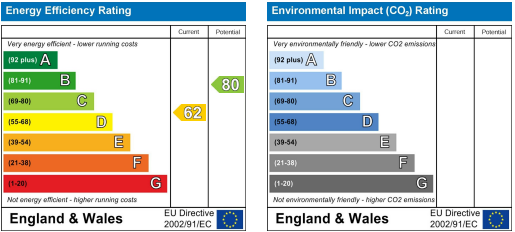
Floor Plan



Area Map



Energy Efficiency Graph



These particulars, whilst believed to be accurate are set out as a general outline only for guidance and do not constitute any part of an offer or contract. Intending purchasers should not rely on them as statements of representation of fact, but must satisfy themselves by inspection or otherwise as to their accuracy. No person in this firm's employment has the authority to make or give any representation or warranty in respect of the property.